



Modern space for tomorrow's business



Modern space for tomorrow's business

SPACES PLANNED FOR BETTER PERFORMANCE

Situated at the future financial epicentre of Navsari, **SWISS TERMINUS** is a perfect fusion of form and function. "TRANSIT DEVELOPERS" never compromises on space and design.

Making optimum use of space in a visually striking and inspirational structure. The project rests on a sound ecological concept, while providing its tenants with state-of-the-art, luxurious, first class commercial facilities.



Banking



Chartered Accountants



Jewellery

LEADING TO THE CHALLENGING FUTURE

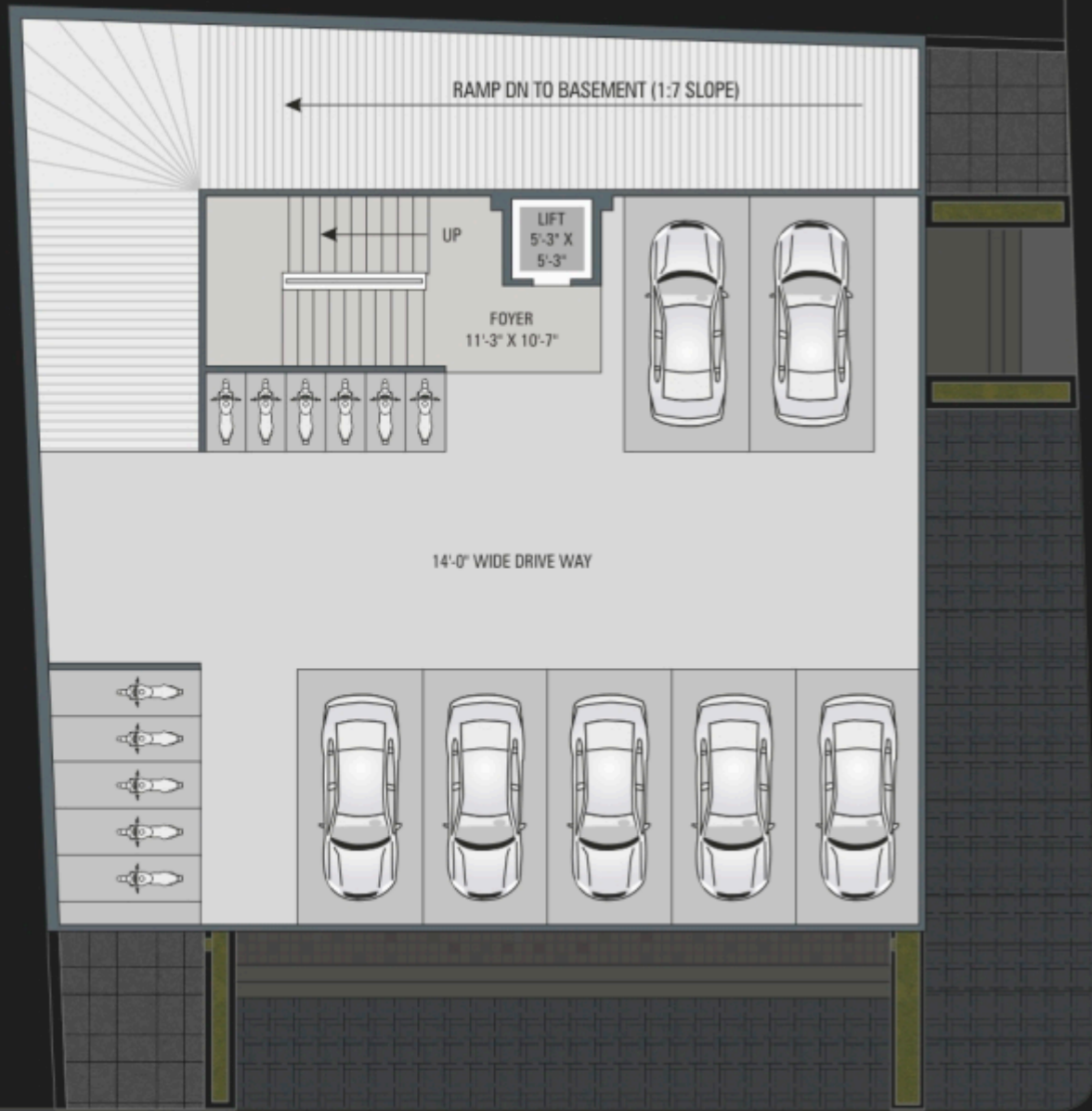
Evolved design, architecture and space manifest in Swiss Terminus. The distinctive, contemporary styling and theme are conceived to reflect your vision for the brand and present shoppers a portal to a new plane of luxury experiences.



BASEMENT PARKING



GROUND FLOOR LAYOUT



30'- 0" WIDE ASHA NAGAR ROAD

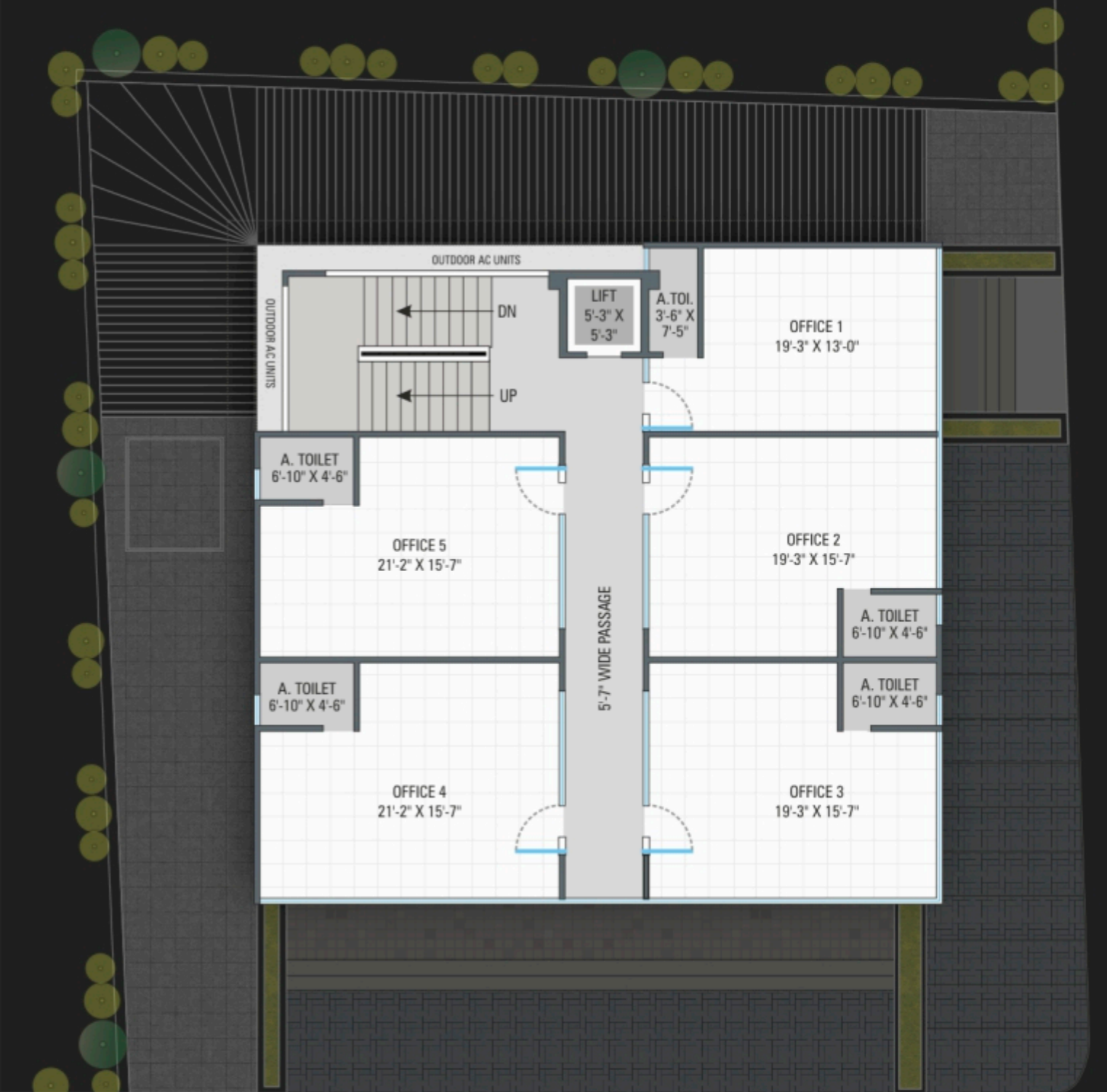
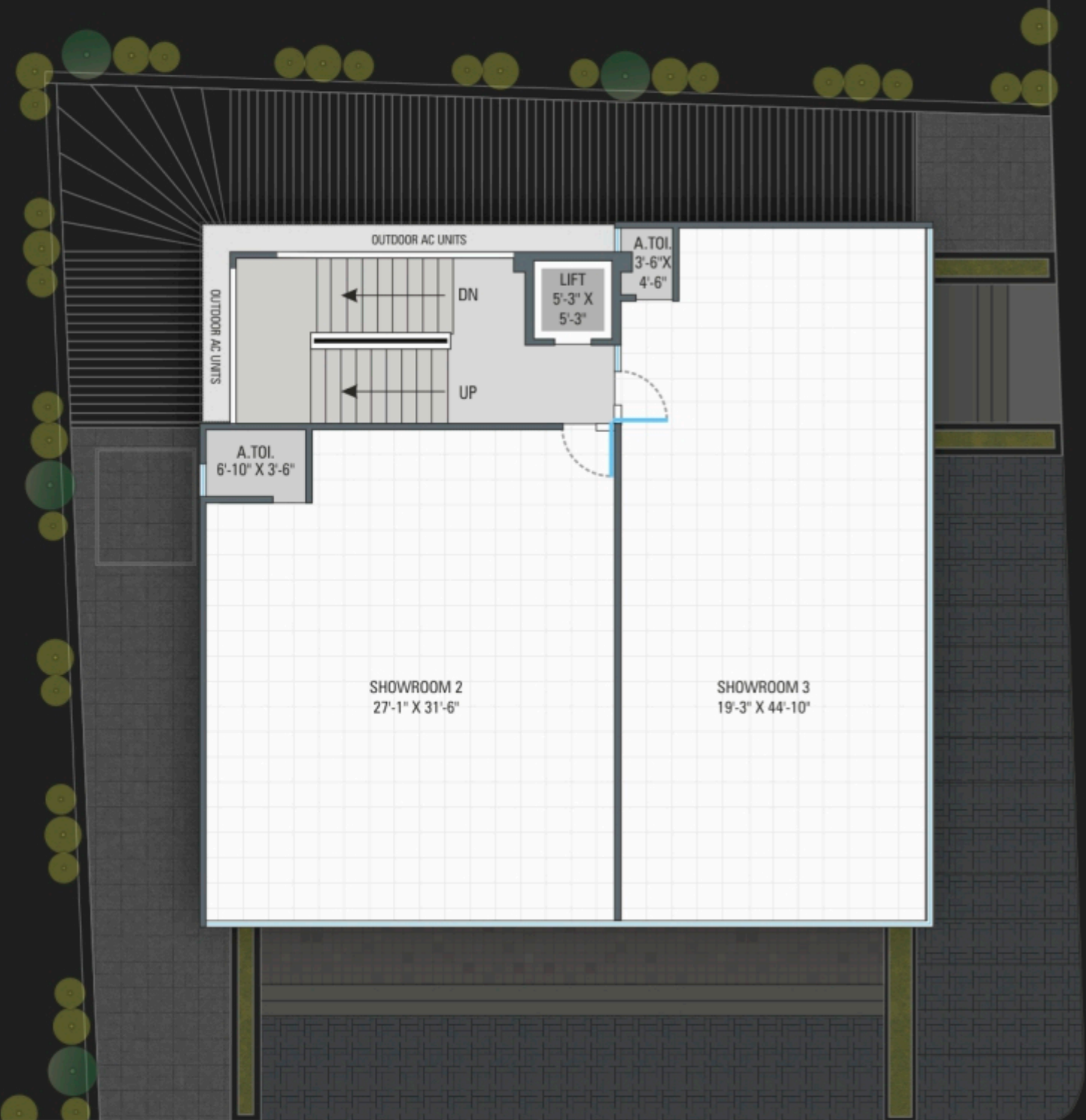
20'- 0" WIDE SOCIETY ROAD



FIRST FLOOR



TYPICAL FLOOR (2nd to 4th floor)





FOCUSING AMBITIONS



TARGETING GOALS

We take pride in our vision inside of your world, It helps us appreciate your needs better. It is no secret that when you choose Transit Developers Pvt. Ltd., You choose the best & take a giant leap in to a bigger & better future.



 **swiss**
TERMINUS
Modern space for tomorrow's business



Corporate
Office



Showrooms



Gym

IMPLEMENT IDEAS FOR MORE LUXURIOUS COMFORT

Swiss Terminus makes strong presence as a brand in one of the most promising emerging markets in South Gujarat.

Electricals Systems, Elevators and Water Supply

Power Load	As per requirement of Offices /Shops
Power Supply	Individual Single Phase meter from Main LT line
Generator Back up	Available Silent D.G Set for Building Common Utility
Passengers Elevators Configuration	Auto Door & High Speed Elevators of Scheduler or OTIS makes
Capacity & Speed of lifts	Lift -06 Passengers of shaft size 5'-3" x 5'-3" of Schindler or OTIS
Sewage System	P.V.C Pipe of Astral or eq. make in Under Ground drainage system as well as in Concealed link with U.P.V.C. & C. P.V.C pipe as per detail given by Plumbing Consultant
Road Network	Internal R.C.C. road with V.D.S. (tri-mix rough finish) & External margin finished with Good Quality Pavers.
Supply of water source Under Ground Over Head	Municipal supply + One Boring 10,000 ltr. 10,000 ltr.
Security System Termite treatment	C.C.T.V Anti Termite treatment by Specialized Agency with 10 Years Warranty
Fire safety	Fire extinguisher, Fire hydrant & Wet riser

Accomplishment

Interior Unit

Wall Finish

Internal single coat Mala Plaster.

Flooring

Granamite Vitrified tile of 32" x 32" in Shops at Ground & Typical floor.

Shutter

Good quality G.I. Automatic Handle Operated Rolling Shutter inside the shops and good quality doors for Offices.

External Building

Plaster

Outside Double coat Mala finish Plaster with texture

Colour

Asian Paints / ICI – whether shield max colour

A.C

Indoor A.C point with Drain Outlet

Elevation

External facade in a combination of Metal Cladding, Solar Glass Facade in front part. Openable glass in offices for ventilation

Terrace

Water proofing in Terrace with Chemical and above that China Mosaic Flooring by special agencies

Interior Common Area

Lift Cladding

Granamite wall Cladding in each floor near Passenger lift entrance.

Entrance Foyer

Well Design Entrance Foyer with Granite wall cladding & Granamite Flooring

Passage

Granite & Granamite flooring.

Staircase

Granite stone flooring on staircase

A. Toilets

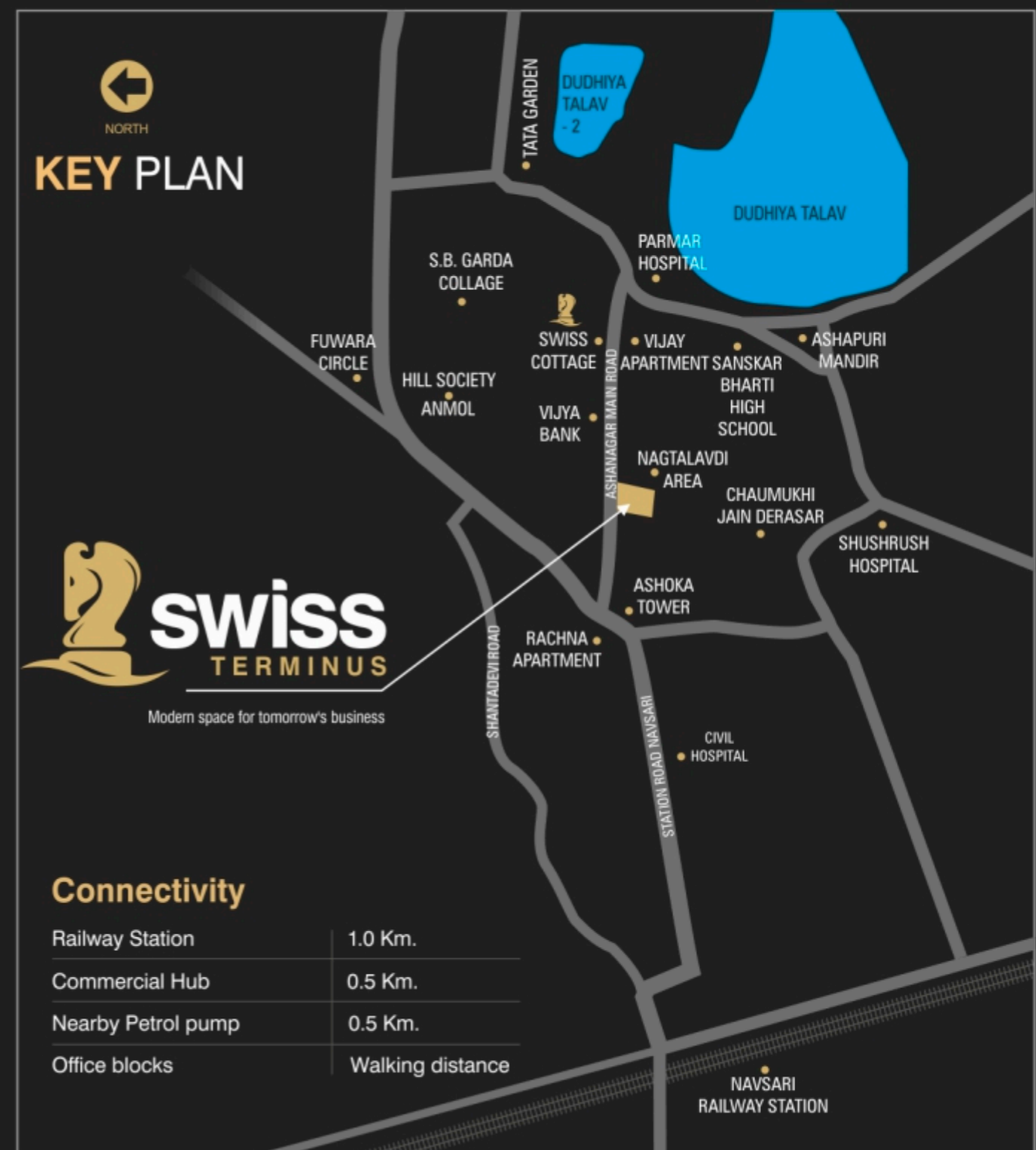
Granamite Flooring & Dado
All sanitary fittings of Cera, Hindware & plumbing fittings of Jaquar make

Electrification

Sufficient in concealed wiring with standard accessories T.V. & telephone point

Parking at Basement

Parking finished with V.D.S. (Tri-mix Rough finish) & Ramp with Granite Strip & Cladding up to 5'-0" of River wash Kotah or Granite on throughout Pardi & column



PROJECT DEVELOPED BY
TRANSIT REALTY A GROUP COMPANY OF



TRANSIT
DEVELOPERS PVT.LTD

Malav K. Dhruv

PROJECT INFORMATION
OR ANY INQUIRY

Malav K. Dhruv
+91 98251 20328

malavdhruv@gmail.com

ARCHITECT



STRUCTURAL



Biren Kansara

DISCLAIMER

• Purchaser shall bear all charges of stamp duty, registration charges, advocate fees of legal document, GST and local authority taxes. • Any additional taxes levied in future by any government authority shall be borne by purchaser. • Only internal changes shall be allowed with prior permission & shall be charged extra. • No external changes shall be permitted. • Signage & Nameplates: Predefined signage & hoardings. • Permission of sign boards as per developer rights & rules. • The right to alter the plans fully or partly or specifications or amenities mentioned are reserved with developers. • The developer reserves all rights to make any amendments in construction as may be necessary. • Plans of various floors indicated are graphic representations only, kindly do not scale. • Placing of A/C outdoor unit strictly as per builder's plan. • No change in structural design or layout possible.

* The Brochure is intended only to convey the essential design and technical features of the scheme and does not form part of legal document.

* Subject to Navsari Jurisdiction.



TRANSIT
DEVELOPERS PVT.LTD